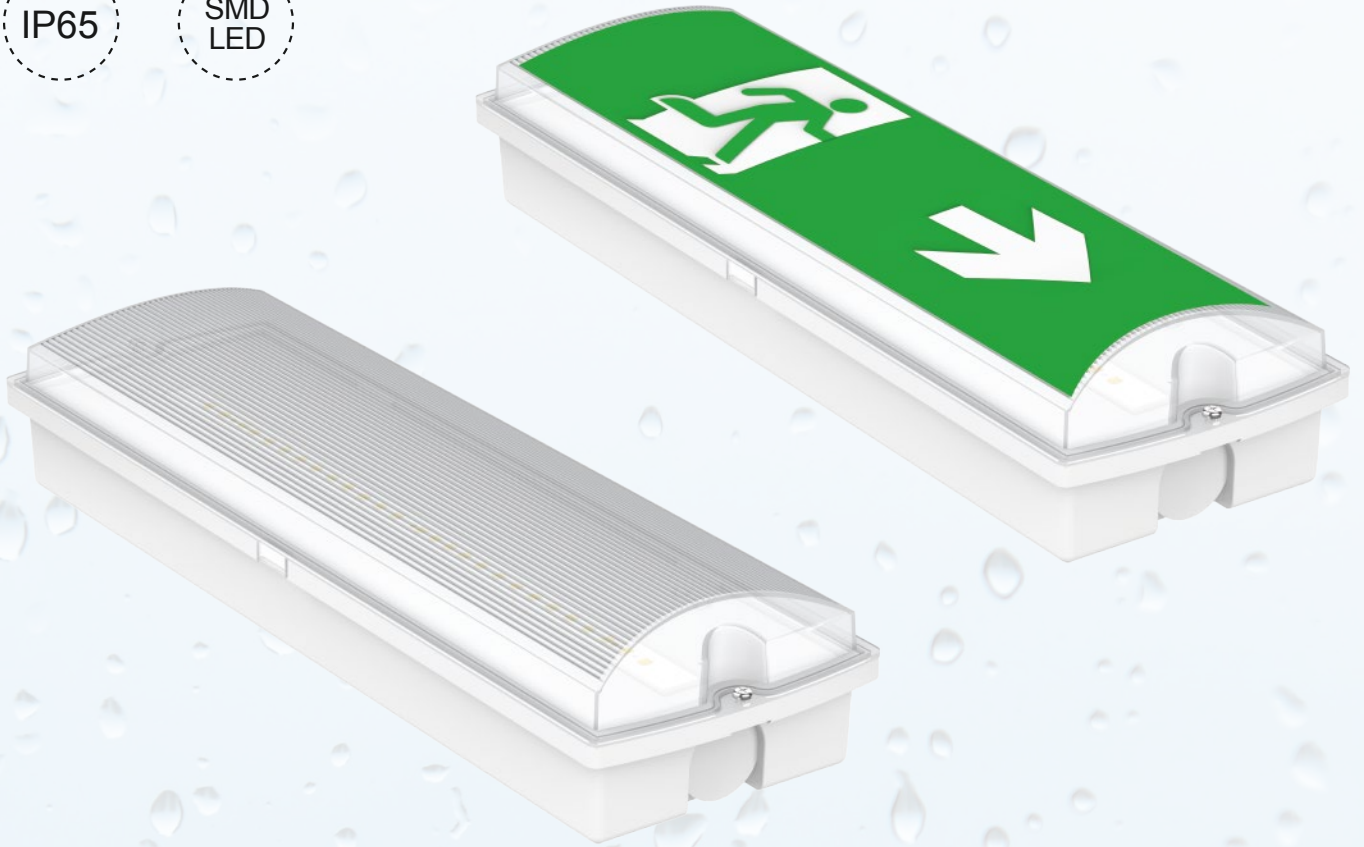


IP65

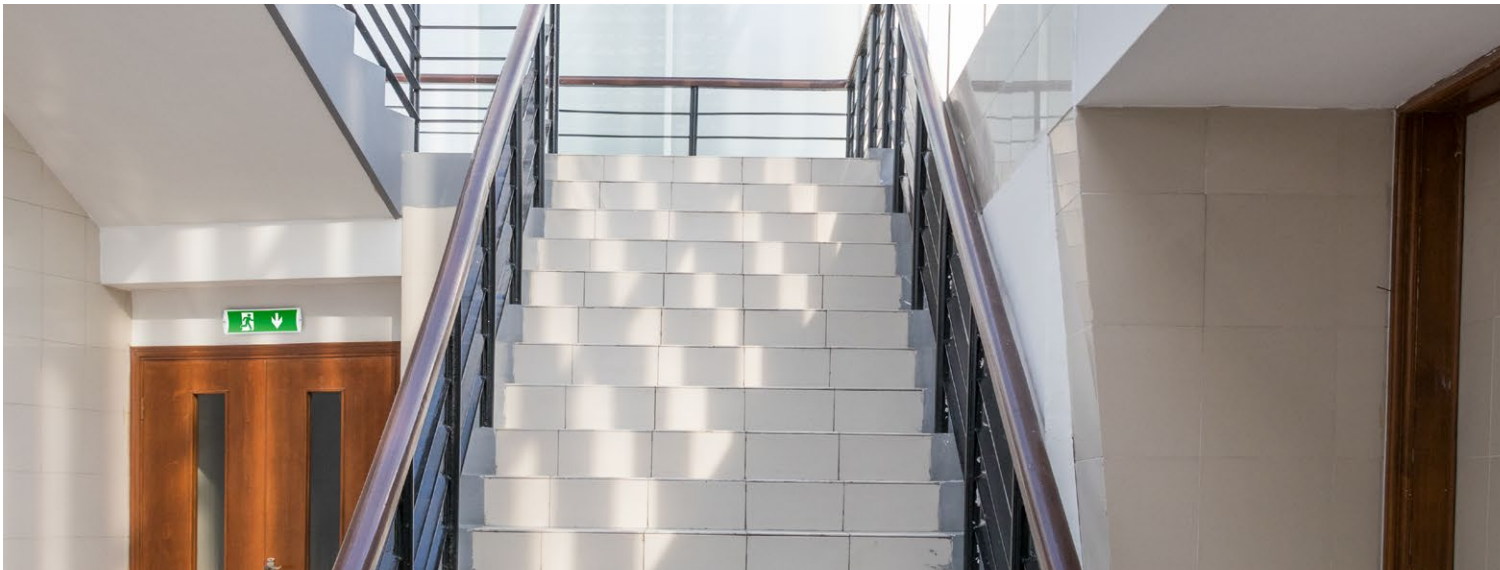
SMD
LED



EPE-EM3

LED Emergency Bulkhead

- Optional interchangeable legends
- Efficient and reliable LED light source
- Suitable for ceiling or wall mount
- Various technology options available



Introduction

EPE-EM2 LED emergency down light is controlled by smart IC, with self-test function. 3W for standard and 6W for high output model, It is All In One type including open area and corridor lens, recessed and surface (option) mounting way. Using the simple line and elegant element, EPE-EM2 has the ability to transcend ordinary design, as well as product quality.

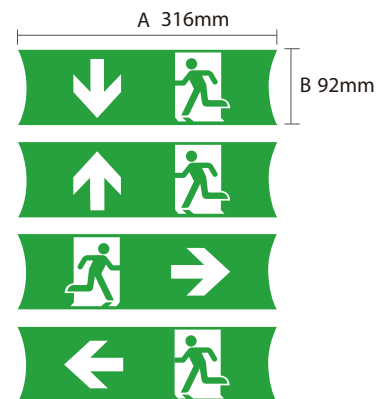
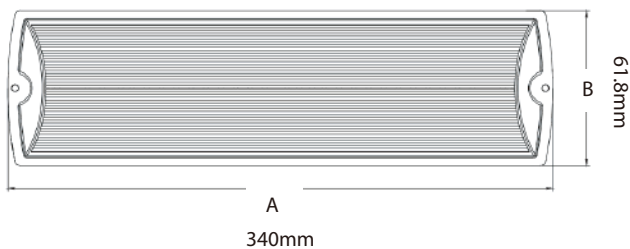
Features

1. Oval lens for pathway application.
2. Round lens for open area application.
3. Smart IC control.
4. LiFePO4 battery, long life time.
5. High power & efficiency LED.

Application Areas

It is designed for emergency lighting applications in office, supermarket, shop, school, hotel, etc. It is also widely used for public areas, such as stairway, lobby, reception, corridors etc.

Product Dimension



Measurement

Model	Product Weight (Kg)		Package weight (Kg)		Carton Size(cm)	Qty/CTN	20GP (pcs)	40HQ (pcs)
	N.W/PC	G.W/PC	N.W/CTN	G.W/CTN				
EPE-EM3	0.6	0.7	7	9	36.5*35*24	10pcs	6750	14250

Model List

Type	Input Voltage	Power Consumption	Charge Duration	Discharge Duration	Battery	Test Mode
EPE-EM3-ST-MT-1H	200-240V	3W Max.	24H	1H	LiFePO4 6.4V600mAh	Manual Test
EPE-EM3-ST-MT-3H	200-240V	3W Max.	24H	3H	LiFePO4 6.4V1500mAh	Manual Test
EPE-EM3-ST-AT-1H	200-240V	3W Max.	24H	1H	LiFePO4 6.4V600mAh	Auto Test
EPE-EM3-ST-AT-3H	220-240V	3W Max.	24H	3H	LiFePO4 6.4V1500mAh	Auto Test

Technical Data Sheet

Model No.		EPE-EM3
Power Consumption Watt		3W
Rated Input Voltage(V)		AC230V
Input Voltage(V)		AC200-240V
LED		SMD 2835
CCT(K)		5000K
"Luminous Flux (lm) ±10%"	Non-DIM	200lm
CRI		>70
LED Driver		Built-in
Protection Class		Class II
IP Rating		IP65
IK Rating		-
Finishing color		White
Material		PC
Glow wire test (°C)		COVER:850 °C / LENS:650 °C
Operating Temp.(°C)		0 °C ~45 °C
Storage Temp.(°C)		0 °C ~65 °C

Driver Datasheet

Power Consumption	3W Max
Rated Input Voltage(V)	AC230V
Frequency	50/60Hz
Input Voltage	AC200-240V
Efficiency	≥65%
Total load wattage	2W Max
Power Factor	≥0.3
Rated Input Current	≤0.08A
Full load output voltage	DC12V
Rated output current	300mA
Output current range	300mA±10%
Power tolerance	10%
Current output tolerance	10%
Short circuit protection	PASS
Over voltage protection	PASS
Over temperature protection	PASS
THD	-
Surge	0.5KV
Withstand voltage	AC3750V

Instructions for automatic test option

1. Once the unit is powered up it will automatically initiate a self test and diagnostics as follows:

- Every 4 seconds: Checks for battery disconnection, charger board fault, lamp fault and transfer fault.
- Every month: Performs a 3 minute duration test.
- Every year: Performs a 1 Hour or 3 Hours duration test.

All test functions are factory preset and do not need field adjustment.

2. Dual Colour Indicator LED Status Meanings

- Green Solid On Ready/Normal Operation
- Red Requires Service

•	One flashes, 4 second pause	Battery not connected
••	Two flashes, 4 second pause	Battery short or low battery voltage
•••	Three flashes, 4 second pause	Charger board fault
••••	Four flashes, 4 second pause	AC/DC transfer fault
•••••	Five flashes, 4 second pause	LED lamp fault

NOTE: After repairing a service fault, press and hold the test button for 2 seconds to reset the flashing indicator light to green.

3. Manual Testing

Press test button once	30 second duration test
Press test button twice within 2 seconds	3 minute duration test
Press test button 3 times within 2 seconds	30 minutes duration test
Press test button 4 times within 2 seconds	1 or 3 hours duration test

FIREFLY TECHNOLOGY (HONG KONG) CO., LTD

Address: Room 2914C, 29th Floor, Ho King Commercial Centre, 2-16 Fa Yuen Street, Mong Kok, Kowloon, Hong Kong

Tel: 00852 4613 9499

Email: Firely@fire-fly.hk

Website: <http://www.fire-fly.hk>